

**STAGE 2 ARCHAEOLOGICAL ASSESSMENT  
QUIRKE LAKE PROPERTY DEVELOPMENT**

**Buckles Township, ON**

**City of Elliot Lake**

**District of Algoma**

**Submitted to:**

Rhona Guertin

Manager Finance & Business Development

Elliot Lake Retirement Living

289 Highway 108

Elliot Lake, ON

P5A 2S9

Phone: (705) 848-4911

E-mail: rhona.guertin.elrl@ontera.net

**PIF # P041-170-2012**

**David J.G. Slattery (License number P041)**

Horizon Archaeology Inc.

220 Chippewa St. W.

North Bay, ON

P1B 6G2

Phone: (705) 474-3864

Fax: (705) 474-5626

E-mail: slattery@vianet.ca

Date of Filing: February 28, 2014

Type of Report: Revised

## EXECUTIVE SUMMARY

Horizon Archaeology Inc. was contacted by Elliot Lake Retirement Living to conduct a Stage 2 Archaeological Assessment of the proposed Quirke Lake development in the Township of Buckles, City of Elliot Lake, District of Algoma (**Map 1**). This report describes the methodology and results of the Stage 2 Archaeological Assessment of the Quirke Lake property which is around the shores of Quirke Lake in Buckles Township, City of Elliot Lake, Algoma District. This study was conducted under the Archaeological Consulting License P-041 issued to David J.G. Slattery by the Minister of Tourism, Culture and Sport for the Province of Ontario. This assessment was undertaken in order to recover and assess the cultural heritage value of interest of any archaeological sites within the project boundaries. All work was conducted in conformity with the Ontario Ministry of Tourism, Culture and Sport (MTCS) Standards and Guidelines for Consultant Archaeologists (MTCS 2011), and the Ontario Heritage Amendment Act (SO 2005).

Horizon Archaeology Inc. was engaged by the proponent to undertake a Stage 2 Archaeological Assessment of the study area and was granted permission to carry out archaeological fieldwork by the owner's representative. The study area was subject to Stage 2 assessment on October 18, 2012 and from June 27 to July 01, 2013. The Stage 2 Archaeological Assessment was conducted using the test-pit survey method at 5m intervals as detailed in section 2.1.5 of *The Standards and Guidelines for Consultant Archaeologists* (MTCS 2011) which states that between 0 and 50m from water test-pit survey will be done at a 5m interval. From 50 to 150m the survey interval may be increased to 10m.

Based upon the information gathered, Horizon Archaeology Inc. is recommending that no further archaeological assessment is required for the entirety of the study area.

## TABLE OF CONTENTS

<b>Executive Summary</b>	<b>i</b>
<b>Project Personnel</b>	<b>iv</b>
<b>1.0 PROJECT CONTEXT</b>	<b>1</b>
<b>1.1 Objectives</b>	<b>1</b>
<b>1.2 Development Context</b>	<b>1</b>
<b>1.3 Historical Context</b>	<b>2</b>
<b>1.3.1 Historical Documentation</b>	<b>2</b>
<b>1.3.2 Pre-Contact Period</b>	<b>2</b>
<b>1.3.3 Post Contact Period</b>	<b>3</b>
<b>1.3.4 Study Area Specific History</b>	<b>3</b>
<b>1.3.5 Summary of Historical Context</b>	<b>4</b>
<b>1.4 Archaeological context</b>	<b>4</b>
<b>1.4.1 Current Conditions</b>	<b>4</b>
<b>1.4.2 Physiography</b>	<b>4</b>
<b>1.4.3 Previous Archaeological Assessments</b>	<b>4</b>
<b>1.4.4 Registered Archaeological Sites</b>	<b>5</b>
<b>2.0 FIELD METHODS</b>	<b>5</b>
<b>2.1 Area 1</b>	<b>6</b>
<b>2.2 Area 4</b>	<b>6</b>
<b>2.3 Area 5a</b>	<b>6</b>
<b>2.4 Area 5b</b>	<b>7</b>
<b>2.5 Area 7</b>	<b>6</b>
<b>2.6 Area 8</b>	<b>7</b>
<b>2.7 Area 9</b>	<b>7</b>
<b>2.8 Area 10</b>	<b>8</b>
<b>2.9 Area 11</b>	<b>8</b>
<b>3.0 RECORD OF FINDS</b>	<b>8</b>
<b>4.0 ANALYSIS AND CONCLUSIONS</b>	<b>9</b>
<b>5.0 RECOMMENDATIONS</b>	<b>9</b>
<b>6.0 ADVICE AND COMPLIANCE WITH LEGISLATION</b>	<b>10</b>
<b>7.0 BIBLIOGRAPHIC SOURCES</b>	<b>11</b>
<b>8.0 PLATES</b>	<b>12</b>
<b>9.0 MAPS</b>	<b>18</b>
<b>Appendix 1</b>	<b>27</b>
<b>Appendix 2</b>	<b>31</b>
<b>Supplemental Documentation</b>	<b>32</b>
<i>List of Plates</i>	
<b>Plate 1: Flat area in Area 1, facing South.</b>	<b>12</b>

*Stage 2 Archaeological Assessment of Quirke Lake Property Development, Buckles Township, City of Elliot  
Lake, Algoma District*

<b>Plate 2:</b> Test pit in Area 1, facing North.	<b>12</b>
<b>Plate 3:</b> Plateau in Area 4, facing North-West.	<b>13</b>
<b>Plate 4:</b> Area test pited in Area 5a, facing West.	<b>13</b>
<b>Plate 5:</b> Cliff face in Area 5b, facing South.	<b>14</b>
<b>Plate 6:</b> Cliff face in Area 7, facing South-east.	<b>14</b>
<b>Plate 7:</b> Flat area paralleling the shoreline in Area 8, facing North.	<b>15</b>
<b>Plate 8:</b> Work in progress in Area 8, facing North.	<b>15</b>
<b>Plate 9:</b> Flat terrain in Area 9, facing South East.	<b>16</b>
<b>Plate 10:</b> Flat terrain subject to Stage 2 assessment in Area 10, facing West	<b>16</b>
<b>Plate 11:</b> Part of Area 11 subject to Stage 2 assessment, facing West.	<b>17</b>

*List of Maps*

<b>Map 1:</b> Project Area	<b>18</b>
<b>Map 2:</b> Development Map	<b>19</b>
<b>Map 3:</b> Project area with area numbers	<b>20</b>
<b>Map 4:</b> Stage 1 map showing cleared areas	<b>21</b>
<b>Map 5:</b> Test pit interval map	<b>22</b>
<b>Map 6:</b> Area 1 plate map	<b>23</b>
<b>Map 7:</b> Area 4 plate map	<b>24</b>
<b>Map 8:</b> Area 5a, Area 8 and Area 9 plate map	<b>25</b>
<b>Map 9:</b> Area 10 and Area 11 plate map.	<b>26</b>

*Stage 2 Archaeological Assessment of Quirke Lake Property Development, Buckles Township, City of Elliot Lake, Algoma District*

**PROJECT PERSONNEL**

<b>Consultant Archaeologist:</b>	David J.G. Slattery, PhD (P-041)
<b>Field Director:</b>	Dayle Elder, M.A. (P-335) Victoria Brooks-Elder, M.A. (P-387)
<b>Field Assistants:</b>	Christopher Britton-Foster, B.Sc. Jolinka Roorda, B.A., G.I.S.-C.S. Leslie-Anne Thoms, B.A.
<b>Report Preparation:</b>	David J.G. Slattery
<b>Archival Research:</b>	Marina Russell, B.Sc.
<b>Pre-Contact Historical Background:</b>	David J.G. Slattery,
<b>Euro-Canadian Historical Background:</b>	Marina Russell (R-423)
<b>Draughting:</b>	Jolinka Roorda Victoria Brooks-Elder
<b>Photography:</b>	Victoria Brooks-Elder Dayle Elder

## **1.0 Project Context**

### **1.1 Objectives**

The objectives of a Stage 2 Archaeological Assessment, as outlined by *the Standards and Guidelines for Consultant Archaeologists* (2011), are as follows:

- To document all archaeological resources on the property
- To determine whether the property contains archaeological resources requiring further assessment
- To recommend appropriate Stage 3 assessment strategies for archaeological sites identified.

### **1.2 Development context**

Horizon Archaeology Inc. was contacted by the proponent, Elliot Lake Retirement Living, to conduct a Stage 2 Archaeological Assessment of the proposed cottage development area on the shores of Quirke Lake, Township of Buckles, City of Elliot Lake, District of Algoma (**Map 1-2**). Prior to the proposed development the subject property formed part of a buffer zone for several uranium mines in the vicinity of Quirke Lake, but was not subject to archaeological survey.

This archaeological assessment has been triggered by the Environmental Assessment Act (R.S.O. 1990) and the proposal to develop waterfront retirement living cottages. The City of Elliot Lake has taken precautions to conserve their cultural heritage in Section 4.3 of the Official Plan for the city, which includes archaeological sites, and conservation is to be considered prior to any development (City of Elliot Lake, Official Plan). The archaeological assessment will be performed prior to any ground being broken by the developer.

The study area consists of seven areas on the waterfront of Quirke Lake and a road access corridor (**Map 3-4**). Permission was granted by the proponent, Elliot Lake Retirement Living, to conduct the Stage 2 Archaeological Assessment. The property was subject to Stage 2 assessment on October 18, 2012 and from June 26 to July 02, 2013.

All records, documentation, field notes and photographs related to the conduct and findings of these investigations are held at the office in North Bay until such time as they can be transferred to an agency or institution approved by the Ontario Ministry of Tourism, Culture and Sport (MTCS) on behalf of the government and citizens of Ontario.

## **1.3 Historical Context**

### **1.3.1 Historical Documentation**

Historic research could not be done in the Elliot Lake library because it was located in the mall that collapsed in spring 2012. Historical research was conducted at the Archives of Ontario on February 13<sup>th</sup> and 14<sup>th</sup> 2013.

### **1.3.2 Pre-Contact**

Based upon the work of Kennedy (1970) and Ellis (1990) occupation of the area would not have been earlier than sometime between 5500-4500 B.P. as glaciers finally retreated and the drainage pattern currently in existence was created. This Shield Archaic culture, traditionally considered to be derived from more western areas (Wright, 1972) is manifested in North Eastern Ontario in the form of small seasonal/nomadic encampments. While contact with more southerly groups undoubtedly did occur, it is difficult to identify clearly imported influences in this area. Hunting and gathering of the available animals, fish and plants provided both food and clothing. The artifact assemblage typically reflects this economy with larger points and scrapers dominating.

#### *Laurel Culture (700 B.C.-A.D. 1000)*

Apparently a natural evolution within a northern context, this period is marked by little change in lifestyle (more highly developed hunter/gathering), and is most clearly defined by the introduction of pottery. This introduction is typically considered to have come from the south rather than being an internal development. Significantly larger numbers of Laurel sites have been found in comparison to those of the earlier period noted above. However, given the rather limited amount of research archaeology conducted in northern Ontario, coupled with the over-representation of CRM driven assessment (modern as versus traditional land-use/exploitation driven), caution must be noted. Yet, the tool assemblage does show the development of more specialized items (awls, net weights, points and scrapers of greater stylistic range and size) which appears to suggest that a wider range of food sources were exploited with a greater result (netting rather than simply harpooning fish, for example). The larger and more varied faunal range identified from Laurel as versus Archaic sites adds to this view; albeit age/preservation issues must form a caution. Still, in the main, the evidence suggests the ability to feed larger populations. The widespread and, apparently, fairly rapid development of a ceramic tradition implies a higher level of contact both within the northern zone and between it and the south.

#### *Late Woodland Period (A.D. 800-Contact (17th century))*

While essentially an internal evolution, during the Late Woodland Period marked differences can be observed between the cultures of the west and the east within northern Ontario. By the dates traditionally used for the Contact Period (Mid 16th C), defined trade routes, their jurisdiction and a general political/trade relationship had been clearly formed. Little evidence of

a similar situation exists along East-West lines. Pottery, the importation of corn and, perhaps, sacred traditions (dog burials, pipes et al.) all appear to have been heavily influenced from the south with the exception of some aspects of western “Black Duck” traditions evidenced, especially in the early phases, in the pottery. Interestingly, the tool assemblage remains somewhat more traditional and probably reflects little change in the economic base of the area. The distinction between Late Woodland and Contact remains open to interpretation in this part of northern Ontario. While it can be defined by the introduction of trade items, until the establishment of actual trading “posts” in the north, the significance of these items as cultural influences is limited.

### **1.3.3 Contact (1650-1890)**

By the time of historic contact, two distinct Algonkian groups inhabited northern Ontario. The Cree generally were to be found in the James Bay drainage system and were more in contact with the traders associated with the Hudson’s Bay Company operations to the north. The Ojibwa appear to have been resident in the area of this project and continued their traditional North-South orientation in terms of trade. The Ojibway presence in this area is corroborated as Elliot lake lies within the area covered by treaty number 61, Robinson-Huron for the Ojibways signed on September 9th 1850, as shown on the 1930 Department of Surveys map Combined Plan of the Main Indian Treaties and Purchases in the Province of Ontario (Archives of Ontario, 1930).

### **1.3.4 Study Area Specific History**

The name “Elliot Lake” is first recorded on a 1910 Dominion map, but Elliot Lake was not established as a community until 45 years later in 1955 after the discovery of a huge ore body of uranium in 1953. Previous to the boom caused by the uranium find the history of the area is characterized by fur trading and extensive logging operations which lasted up until 1950. Tourist outfitters catering to the hunting and fishing industries have also been active in the area since the turn of the 20th century. The area in which the city of Elliot Lake and May Lake are located in is in the territory of the Ojibway Nation and pictographs have been found on Quirke Lake, located to the North of May Lake. (City of Elliot Lake, 2011)

Past land use for the proposed development falls within the buffer zone for the decommissioned uranium mines of the area, but the land for this development was never directly mined. Maps for this area are too large of a scale to discern the property area in order to gain any further insights about the property area specifically. In the vicinity of the project area there were eleven uranium mines, all of which were located to the north of May Lake.

### **1.3.5 Summary of Historical Contents**

Historical research has shown that the documentation of this region is limited. Development in Elliot Lake and the surrounding townships since 1955, up until the closure of the uranium mines, has almost exclusively revolved around mining. Since the closure of the uranium mines Elliot Lake has become a retirement community and most development beyond the core of the city has ceased.

## **1.4 Archaeological Context**

### **1.4.1 Current Conditions**

The study area consists of Canadian Shield with forest cover. All of the property is located on the waterfront along the shores of Quirke Lake as well as an island in the centre of the lake (**Map 1-5**). Access to the development areas involves the use of a vehicle and then a boat. Each area allotted for development was assigned a number so that they could be referenced easily both in writing and verbally (**Map 3-5**). The current land use for the property lies within the buffer zone of decommissioned uranium mines and has been, by law, reforested to its pre-mine condition, as much as possible. In proximity to the project area, running approximately north-south along the south shore of Quirke Lake is Stanrock Road, which provides access to Quirke Lake. The topography of the project area is characterized by narrow shorelines leading up to broken hilly terrain with areas of exposed bedrock.

### **1.4.2 Physiography**

The property area is located on the Canadian Shield which is composed of gneiss and granite bedrock dating to the late Precambrian Age. The topography varies from the Algonquin highlands to rocky knolls and ridges. The soil of this area is generally high in clay values. In terms of the soil the majority of the project area sits in a soil area defined as rock land, with its characteristics being less than 10 centimetres of soil material overlying bedrock and areas of exposed bedrock (Baldwin, Desloges, and Band 2000: 3). Both conifers and hardwoods dominate the area. In the case of the development areas on Quirke Lake, the forest is the result of reforestation after the closure of the uranium mines in the vicinity of the project area.

### **1.4.3 Previous Archaeological Assessments**

The property area was subject to a Stage 1 Archaeological Assessment. The assessment of the Quirke Lake Property Development, P041-168-2012, included a property inspection of the project area. In this report the project area was divided into 11 areas (**Map 2-3**), for ease of communication. From the stage 1 all of Area 2, 3, 5b, 6, and 7 and parts of Area 1, 4, 5a, 8, 9 and 11 were cleared of further archaeological concerns. This meant that parts of Area 1, 4, 5a, 8 and 9 as well as all of Area 10 required Stage 2 Archaeological Assessment (**Map 5**). P041-

169-2012 recommended that all Stage 2 Archaeological Assessment be done using section 2.1.5 “Alternative Strategies for special survey conditions: test pit survey in Northern Ontario and on Canadian Shield Terrain” in *The Standards and Guidelines for Consultant Archaeologists*. Section 2.1.5 states that from 0 to 50m test pit survey is to be done at 5m intervals, and from 50 to 150m test pit survey interval can be increased to 10m (MTCS 2011: 35).

#### **1.4.4 Registered Archaeological Sites**

Rooster Rock is a rock art site on the west side of the peninsula upon which the Stanrock Mine was located. It is around 1.5km north of the nearest project area for the development.

## **2.0 Field Methods**

The property area was subject to a Stage 2 Archaeological Assessment on October 18, 2012 and from June 27 to July 01, 2013. Temperatures during the Stage 2 ranged from a morning low of 5 degrees Celsius and a daytime high of 28 degrees Celsius with mostly sunny days, and a few overcast days. For a more detailed description of each daily condition see Appendix B. Assessment did not take place in conditions that were not conducive to archaeology as per Section 2.1s.3 in *The Standards and Guidelines for Consultant Archaeologists* (MTCS 2011: 29).

The Stage 2 Archaeological Assessment was done using section 2.1.5 “Alternative Strategies for special survey conditions: test pit survey in Northern Ontario and on Canadian Shield Terrain” in *The Standards and Guidelines for Consultant Archaeologists*. Section 2.1.5 states that from 0 to 50m test pit survey is to be done at 5m intervals, and from 50 to 150m test pit survey interval can be increased to 10m (MTCS 2011: 35). All test pits were at least 30 cm in diameter, dug 5cm into subsoil, screened through 6mm mesh and backfilled after investigation. Approximately 90% of the subject property was test pitted, the areas not surveyed were areas of steep slope. The boundaries of each area of the property were determined by examining the maps provided by the proponent.

No restrictions were placed on the work, as the archaeological assessment was carried out during the preliminary/planning stage of the development process. Maps have been provided by the proponent and they are at a scale of 1:45,000. Detailed maps of where each lot will be situated are not available at this stage in the development process. The maps and plans contained in this report represent the best available. The equipment used to obtain the GPS coordinates for the four corners and centres of each area was a Magellan eXplorist 610 unit. The subject property was divided into 11 areas for ease of description and communication. Additionally, Area 5 was divided into 5a and 5b and consists of two islands (**Map 2-5**).

## **2.1 Area 1**

Area 1 is located on the north shore of the lake (**Map 6**), is planned to be a boat launch / water access area and measured approximately 130 m north-south by 125 m east-west. Panel Mine Road divides the area into north and south halves.

The Stage 1 of Quirke Lake found that the north half of Area 1 is dominated by steep slopes and bedrock outcroppings. The southern half is composed of a flat treed area that at its southern edge slopes steeply to Quirke Lake. Based on this 50% of this area is steep slope which will not be test pitted and 50% is flat and will be subject to test pitting. Based upon slope and bedrock outcroppings, the part of Quirke Lake Area 1 north of Panel Mine Road is considered low potential, and does not require further assessment. The area to the south of the road however does not exhibit any obvious signs of disturbance, and requires further assessment (**Plate 1**). The area to the south of Panel Mine Road was subject to Stage 2 Archaeological Assessment (**Plate 2**).

No artefacts were recovered during the Stage 2 Archeological Assessment of Area 1.

## **2.2 Area 4**

Area 4 is roughly “L” shaped (**Map 7**) with a total length of approximately 2.69 km, and between 85 and 375 m wide.

The Stage 1 assessment found that the part of Area 4 on the south shore of Quirke Lake measured a little over 2.00 km long, and the north-south extension of the area on the east shore of Quirke Lake measured 691 metres in length. Area 4 was composed primarily of steep slope, bedrock outcrops and cliffs that require no further assessment. Based on this 10% was flat and therefore test pitted. Another 80% was steep slope which was not test pitted. The remaining 10% was composed of cliff faces which were cleared during the Stage 2.

An area that slightly protrudes into the bay measuring approximately 490 x 220 m midway along the east-west arm of Area 4 contained a relatively large flat plateau overlooking the water and is classified as high potential (**Plate 3**). This area was subject to Stage 2 Archaeological Assessment. Test pits were dug on a 5m grid. They were composed of a black organic layer, then a brown-red loam, and then a yellow-orange subsoil. Test pits averaged a depth of 15cm. Careful visual examination of the cliff face in Area 4 found that no pictographs were present.

No artefacts were recovered during the Stage 2 archaeological assessment of Area 4.

## **2.3 Area 5a**

The Stage 1 assessment found that steep bedrock slopes compose the southern shore of the island and slope down to the north. The southern half of the island is low potential and does not require further assessment. Careful visual examination of the cliff face in Area 4 found that no pictographs were present. The northern half of the island, and part of the eastern end of the

island are composed of areas of flat terrain cut by gullies. Based on this 50% is steep slope which was not test pitted and the remaining 50% is flat and was test pitted. This “L” shaped area measures a total of 515m long and has a maximum width of 122 m (**Map 8**), and was subject to Stage 2 assessment (**Plate 4**). The area was test pited at 5m intervals. The soil consisted of a black organic layer, grey podzoiil, orange loam and light brown subsoil. Test pits averaged a depth of 15cm.

A small, near vertical rock faces form part of the southern shore of the island. No pictographs were present upon careful examination.

No artefacts were recovered during the Stage 2 archaeological assessment of Area 5a.

#### **2.4 Area 5b**

The Stage 1 assessment found a small area of vertical cliff on the northeast side of the small island. No pictographs were present upon careful examination (**Plate 5**).

#### **2.5 Area 7**

The Stage 1 assessment found a small area cliff faces at the northernmost of Area 7. No pictographs were present upon careful examination (**Plate 6**).

#### **2.6 Area 8**

The Stage 1 assessment found that steep slope and bedrock outcroppings ring a flat area paralleling the shoreline that measured approximately 780m x 200m (**Map 8**). This section of Area 8 (**Plate 7**) was subject to Stage 2 assessment and all other parts are low potential and require no further assessment. Based on this 60% is steep slope and was not test pitted. The remaining 40% that was flat was test pitted.

The flat area paralleling the shoreline was test pitted at 5m intervals (**Plate 8**). Soil was composed of a dark brown organic layer, a grey podzoiil layer, orange loam and yellow-brown subsoil. Test pits averaged a depth of 17cm.

Not artefacts were recovered during the Stage 2 Archaeological Assessment of Area 8.

#### **2.7 Area 9**

The Stage 1 assessment found that Area 9 is punctuated by numerous bedrock outcrops along the shore and the land rises steeply as one moves away from the lake. Between the bedrock outcrops along the shore are areas of high potential; flat terrain in an otherwise broken and uneven landscape located along the lakeshore (**Map 8**). Based on this 40% is steep slope and was not test pitted. The remaining 60% is flat which was test pitted. This area of high potential was subject to Stage 2 assessment (**Plate 9**). The area extends along the entire shore-line and a

maximum of 75 metres inland. The soil was composed of a black organic layer, grey podzoi, orange loam and brown-yellow subsoil. Test pits averaged a depth of 15cm.

The stage 1 found that all other parts of Area 9 were low potential and did not require Stage 2 assessment.

No artefacts were recovered during the Stage 2 Assessment of Quirke Lake Area 9

## **2.8 Area 10**

Area 10 is approximately 1.5 km south of the Rooster Rock rock-art location. The Stage 1 assessment found that the main feature of this project area is long, broad plateau paralleling the water (**Map 9**). While the sides are steep along the south side, access is much easier from the west where it slopes more gently from the lake (**Plate 10**). About 90% of Area 10 is classified as high potential and was subject to Stage 2 assessment. The remaining 10% is steep slope and was not test pitted.

No artefacts were recovered from the Stage 2 Assessment of Quirke Lake Area 10.

## **2.9 Area 11**

Quirke Lake Area 11 is located to the east of a public boat launch and dock on the north side of Stanrock Road. The Stage 1 assessment found that a near vertical bedrock rock face prevents foot access from the road or boat launch parking lot however. Most of the project area is composed of sloping bedrock outcrops and is considered low potential, not requiring further assessment (**Map 9**). There is a part of the project area measuring approximately 70m north-south by 140m east-west which is flat and broad that is classified as high potential and was subject to Stage 2 assessment (**Plate 11**). Based on this 50% of the area is steep slope and 20% is exposed bedrock which were not test pitted. The remaining 30% is flat and was subject to test pitting.

The area that was subject to Stage 2 assessment was close to the shore and was test pitted at 5m intervals. Test pits were composed of a dark brown organic layer, a grey podzoi layer, orange sandy loam and an orange-brown subsoil. Test pits averaged a depth of 21 cm.

## **3.0 Record of Finds**

No artefacts were recovered during the Stage 2 Archaeological Assessment of the Quirke Lake Property Development. The documentary record generated in the field includes daily field notes, 96 digital photographs and GPS co-ordinates.

#### **4.0 Analysis and Conclusions**

No archaeological sites were identified.

#### **5.0 Recommendations**

The Stage 2 Archaeological Assessment of the Quirke Lake Property Development did not identify any archaeological sites. It is recommended that no further archaeological assessments on the property be required.

## **6.0 Advice On Compliance With Legislation**

This report is filed with the Minister of Culture as a condition of licensing in accordance with Part VI of the Ontario Heritage Act, R.S.O. 1990, c 0.18. The report is reviewed to ensure that it complies with the standards and guidelines that are issued by the Minister, and that the archaeological fieldwork and report recommendations ensure the conservation, protection and preservation of the cultural heritage of Ontario. When all matters relating to archaeological sites within the project area of a development proposal have been addressed to the satisfaction of the Ministry of Tourism and Culture, a letter will be issued by the ministry stating that there are no further concerns with regard to alterations to archaeological sites by the proposed development.

It is an offence under Section 48 and 69 of the Ontario Heritage Act for any party other than a licensed archaeologist to make any alteration to a known archaeological site or to remove any artifact or other physical evidence of past human use or activity from the site, until such time as a licensed archaeologist has completed archaeological fieldwork on the site, submitted a report to the Minister stating that the site has no further cultural heritage value or interest, and the report has been filed in the Ontario Public Register of Archaeology Reports referred to in Section 65.1 of the Ontario Heritage Act.

Should previously unknown or deeply buried archaeological resources be uncovered during development, they may be a new archaeological site and therefore subject to Section 48 (1) of the Ontario Heritage Act. The proponent or person discovering the archaeological resources must cease alteration of the site immediately and engage a licensed consultant archaeologist to carry out archaeological fieldwork, in compliance with Section 48 (1) of the Ontario Heritage Act.

The Cemeteries Act, R.S.O. 1990 c C.4 and the Funeral, Burial and Cremation Services Act, 2002, S.O. 2002, c.33 (when proclaimed in force) require that any person discovering human remains must notify the police or coroner and the Registrar of Cemeteries at the Ministry of Consumer Services.

Archaeological sites recommended for further archaeological fieldwork or protection remain subject to Section 48 (1) of the Ontario Heritage Act and may not be altered, or have artifacts removed from them, except by a person holding an archaeological license.

## **7.0 BIBLIOGRAPHIC SOURCES**

- 1930 Archives of Ontario; Map 20a Combined Plan of the Main Indian Treaties and Purchases in the Province of Ontario. Province of Ontario Department of Surveys
- 2000 Baldwin, David; Desloges, Joseph and Band, Lawrence. Chapter 2: Physical Geography of Ontario, in *Ecology of a Managed Terrestrial Landscape*, UBC Press
- 1990 Ellis, Christopher, Ian Kenyon and Michael Spence; The Archaic. In *The Archaeology of Southern Ontario to A.D. 1650*, Edited by C. Ellis and N. Ferris, pp. 65-124. Occasional Publications of the London Chapter of the Ontario Archaeological Society, London
- 1970 Kennedy, C. *The Upper Ottawa Valley*, Renfrew County Council, Pembroke
- 2011 Ministry of Tourism, Culture and Sport, *Standards and Guidelines for Consultant Archaeologists*
- 2011 The City of Elliot Lake “City of Elliot Lake Official Plan”  
[http://www.cityofelliotlake.com/en/cityservices/resources/ConsolidatedOfficialPlan98-2206Oct19\\_app.pdf](http://www.cityofelliotlake.com/en/cityservices/resources/ConsolidatedOfficialPlan98-2206Oct19_app.pdf), pp. 9,  
The City of Elliot Lake “History of Elliot Lake”,  
<http://www.cityofelliotlake.com/en/cityhall/history.asp>
- Wright, J.V.
- 1972 Ontario Prehistory: An Eleven-Thousand Year Archaeological Outline. Ottawa: Canadian Museum of Civilization.

## **8.0 Plates**



**Plate 1:** Flat area in Area 1, facing South.



**Plate 2:** Test pit in Area 1, facing North.

*Stage 2 Archaeological Assessment of Quirke Lake Property Development, Buckles Township, City of Elliot Lake, Algoma District*



**Plate 3:** Plateau in Area 4, facing North-West



**Plate 4:** Area test pited in Area 5a, facing West,

*Stage 2 Archaeological Assessment of Quirke Lake Property Development, Buckles Township, City of Elliot Lake, Algoma District*



**Plate 5:** Cliff face in Area 5b, facing South.



**Plate 6:** Cliff face in Area 7, facing South-east

*Stage 2 Archaeological Assessment of Quirke Lake Property Development, Buckles Township, City of Elliot Lake, Algoma District*



**Plate 7:** Flat area paralleling the shoreline in Area 8, facing North.



**Plate 8:** Work in progress in Area 8, facing North.

*Stage 2 Archaeological Assessment of Quirke Lake Property Development, Buckles Township, City of Elliot Lake, Algoma District*



**Plate 9:** Flat terrain in Area 9, facing South-East.



**Plate 10:** Flat terrain in subject to Stage 2 assessment in Area 10, facing West.

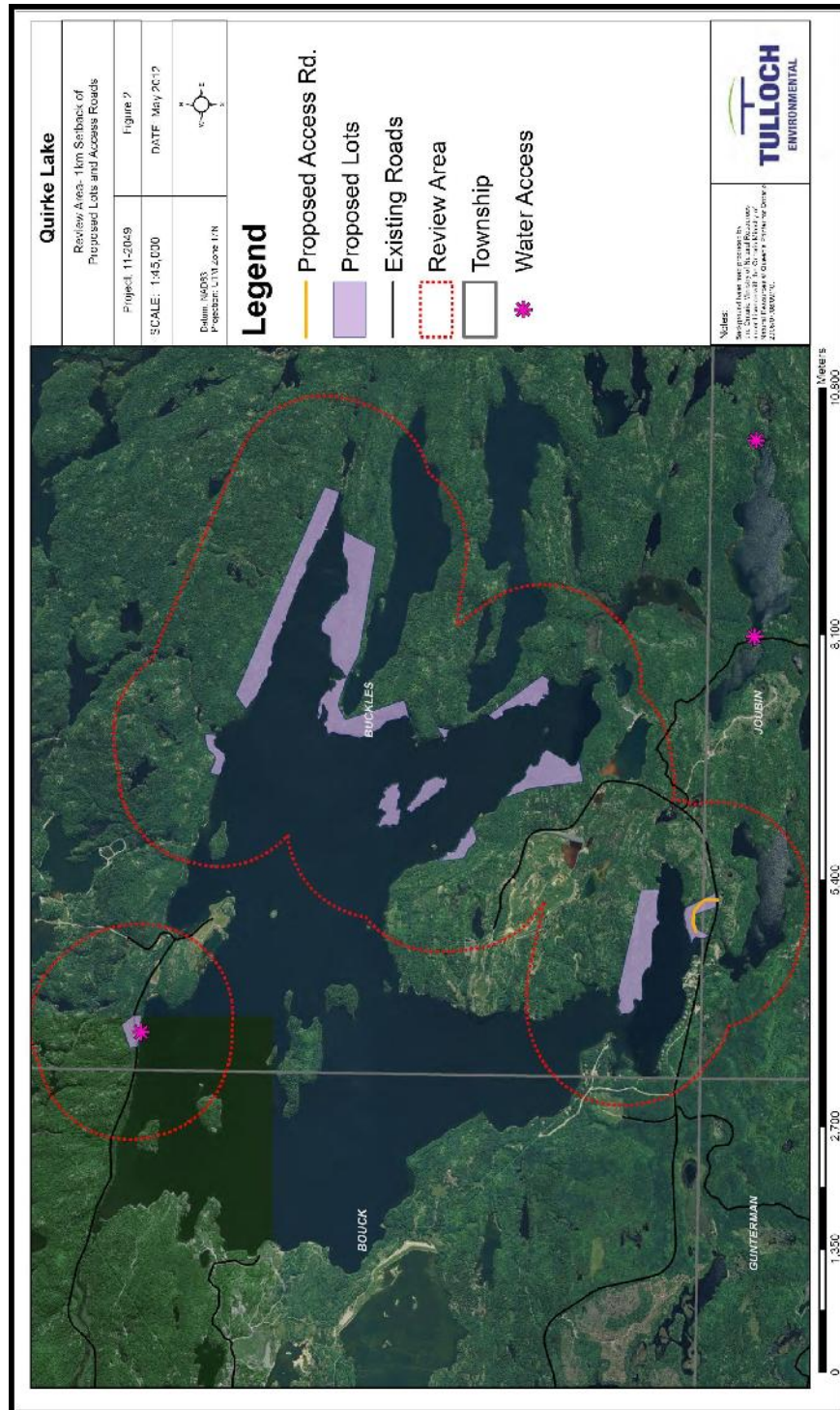
*Stage 2 Archaeological Assessment of Quirke Lake Property Development, Buckles Township, City of Elliot Lake, Algoma District*



**Plate 11:** Part of Area 11 subject to Stage 2 assessment, facing West.

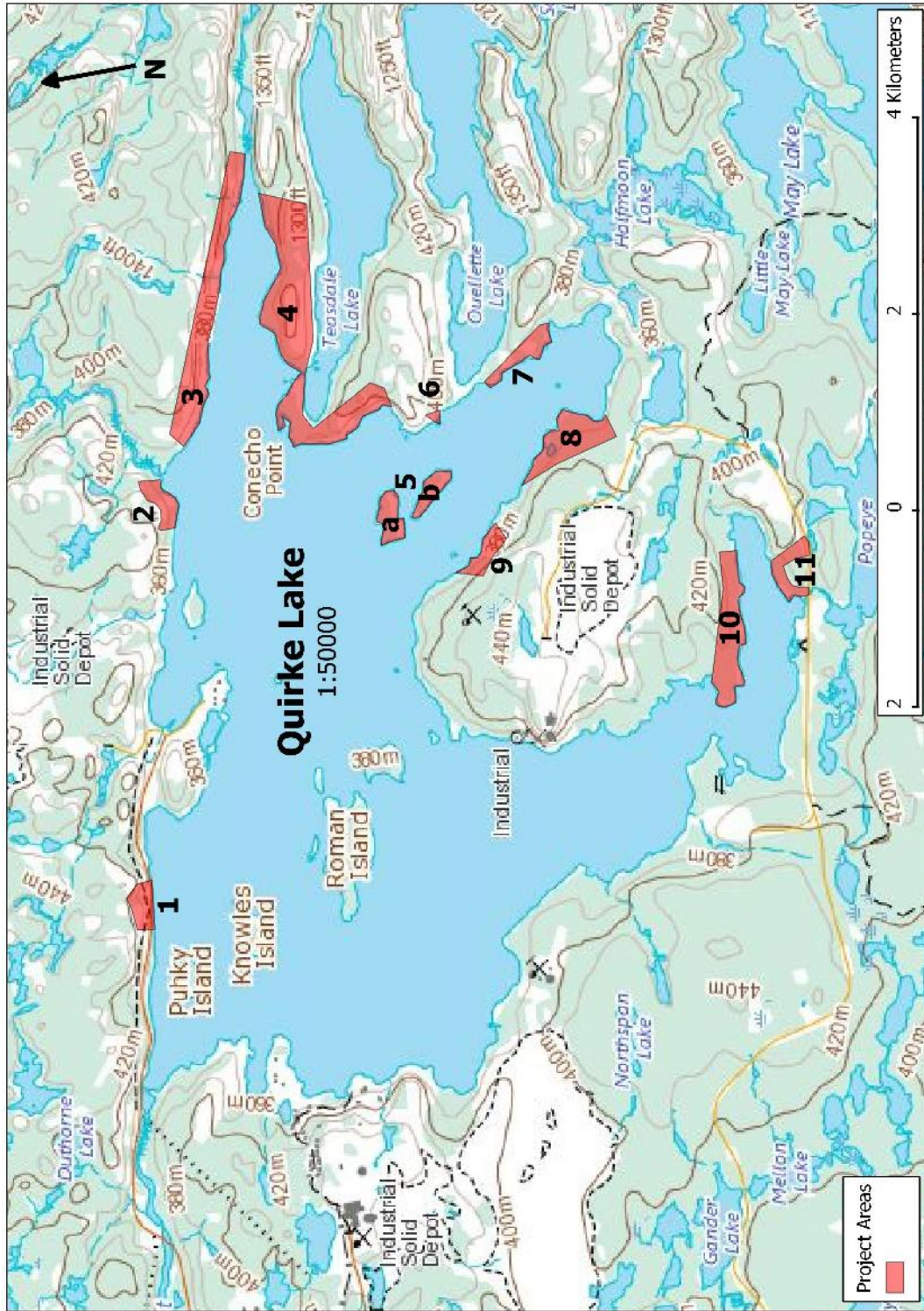


*Stage 2 Archaeological Assessment of Quirke Lake Property Development, Buckles Township, City of Elliot Lake, Algoma District*



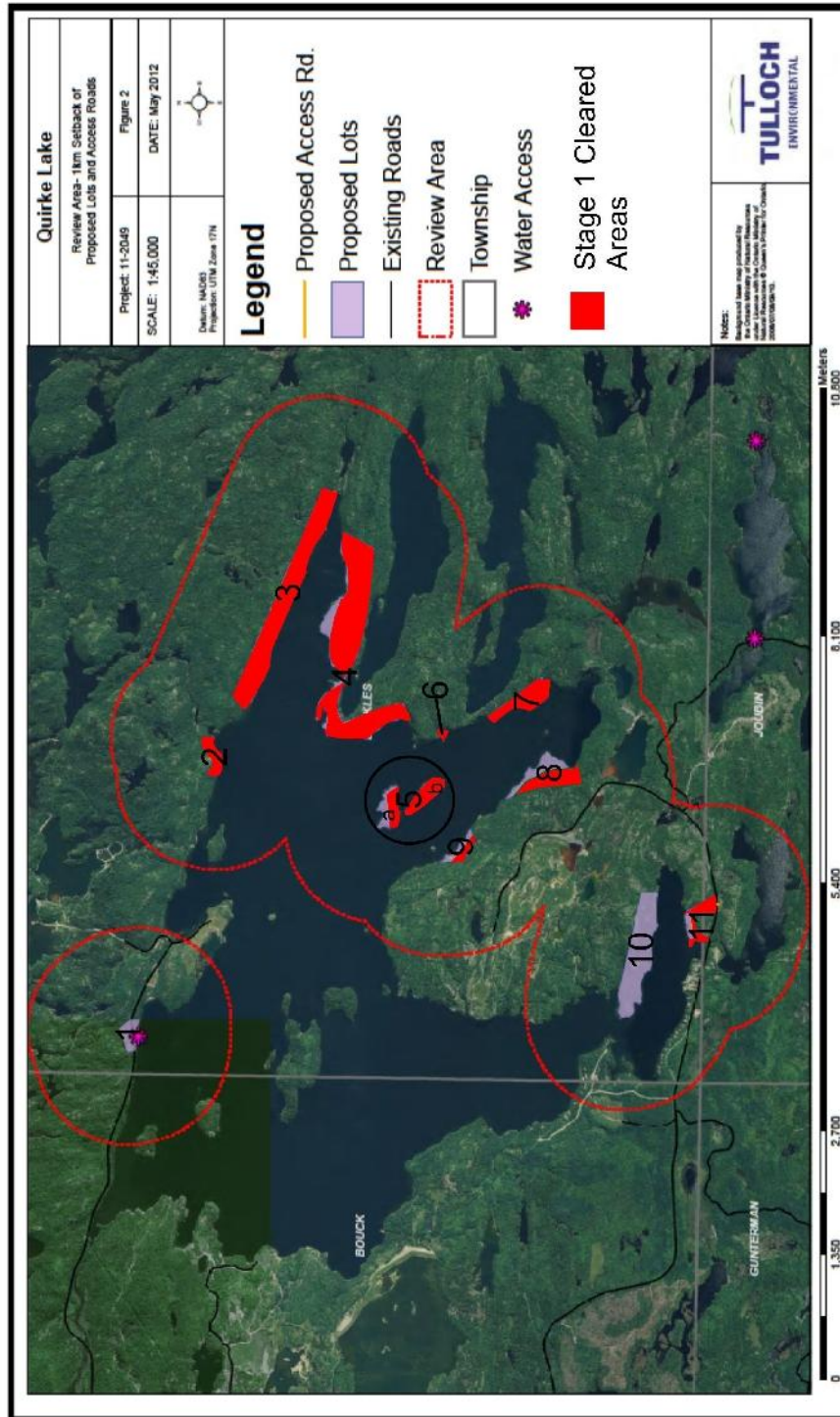
**Map 2:** Development Map

*Stage 2 Archaeological Assessment of Quirke Lake Property Development, Buckles Township, City of Elliot Lake, Algoma District*



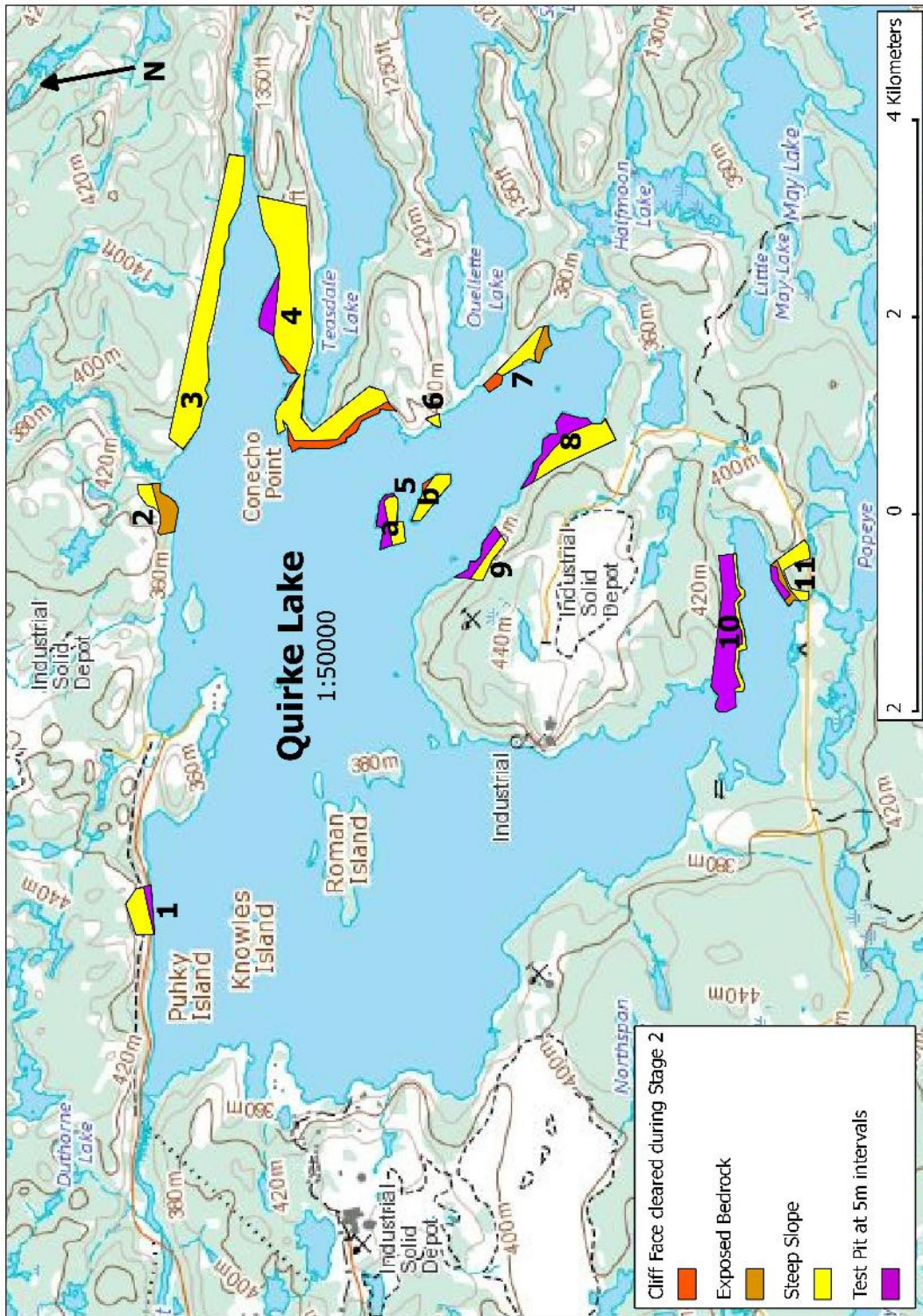
**Map 3:** Project Area with area numbers

*Stage 2 Archaeological Assessment of Quirke Lake Property Development, Buckles Township, City of Elliot Lake, Algoma District*



**Map 4:** Stage 1 map showing cleared areas.

Stage 2 Archaeological Assessment of Quirke Lake Property Development, Buckles Township, City of Elliot Lake, Algoma District

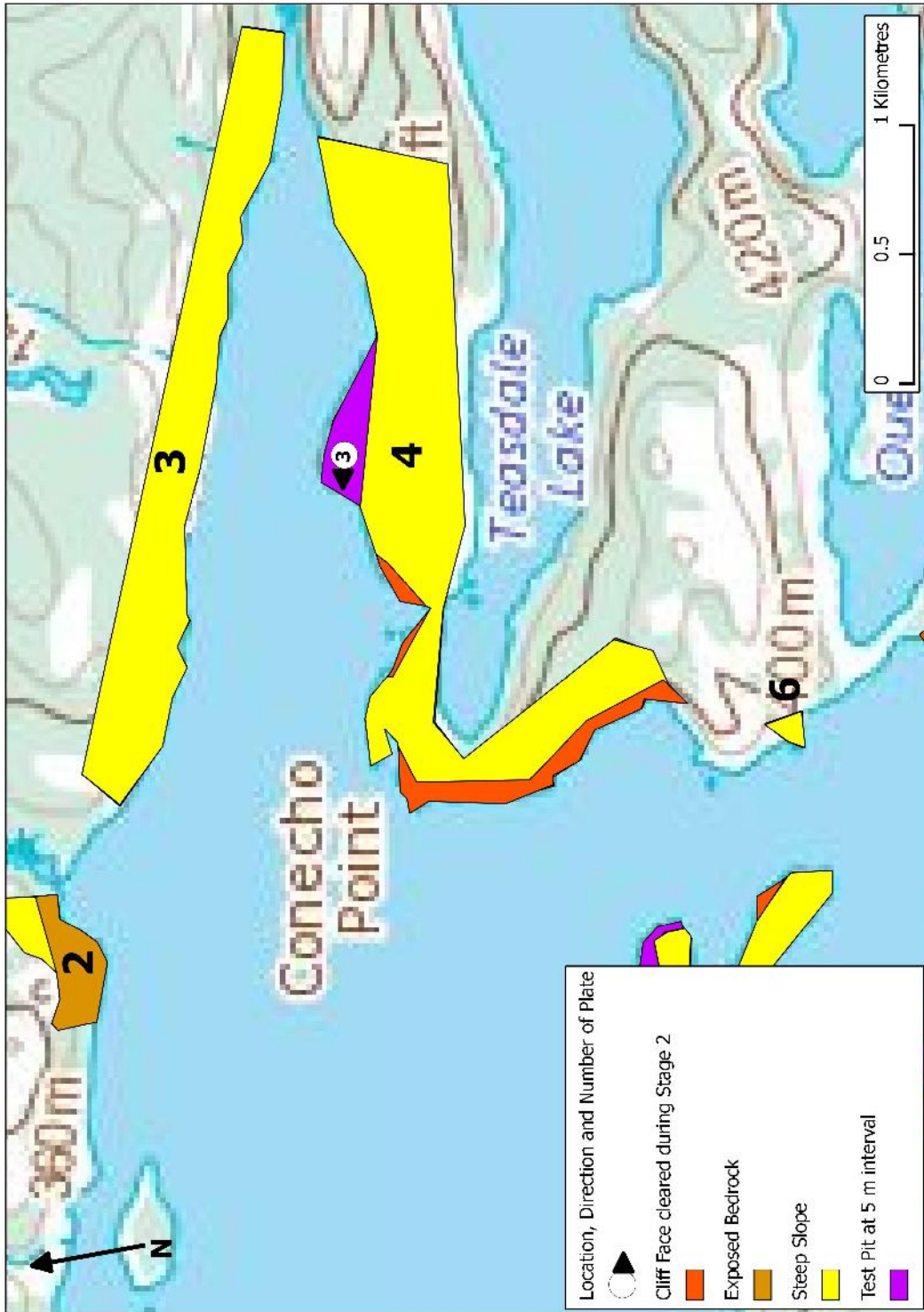


Map 5: Test pit interval map

*Stage 2 Archaeological Assessment of Quirke Lake Property Development, Buckles Township, City of Elliot Lake, Algoma District*

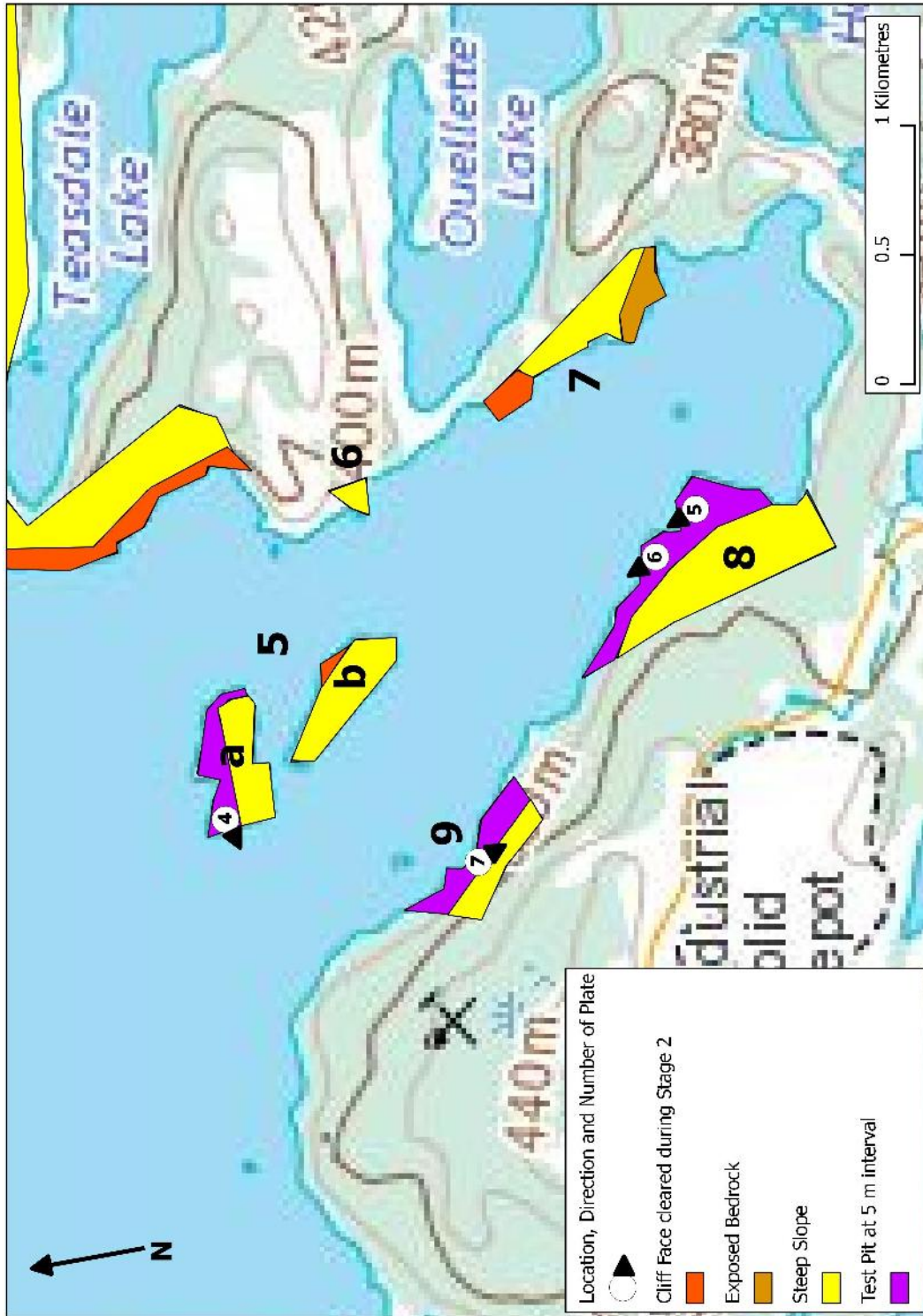


*Stage 2 Archaeological Assessment of Quirke Lake Property Development, Buckles Township, City of Elliot Lake, Algoma District*



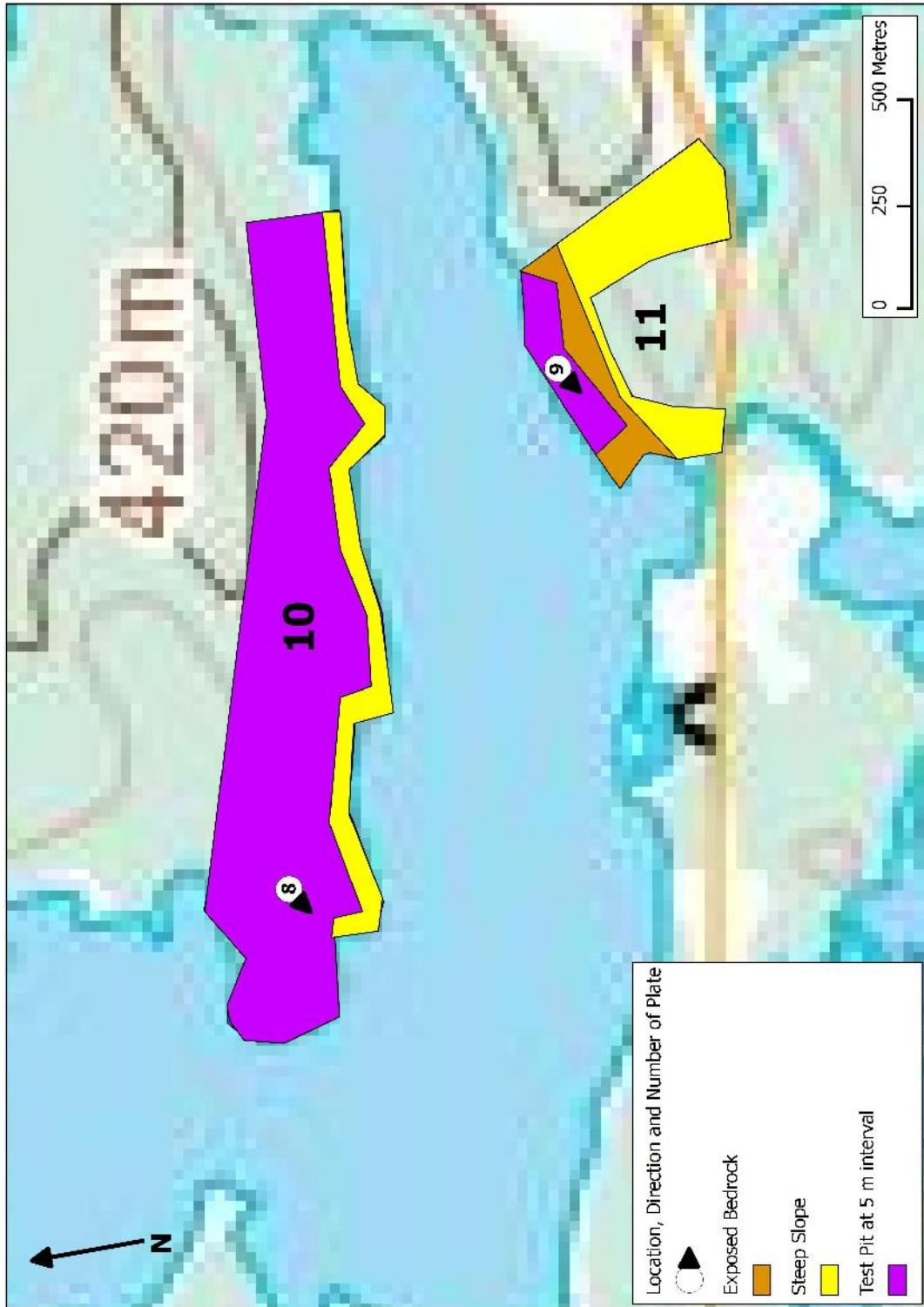
**Map 7:** Area 4 plate map

Stage 2 Archaeological Assessment of Quirke Lake Property Development, Buckles Township, City of Elliot Lake, Algoma District



Map 8: Area 5a, Area 8 and Area 9 plate map

*Stage 2 Archaeological Assessment of Quirke Lake Property Development, Buckles Township, City of Elliot Lake, Algoma District*



**Map 9:** Area 10 and Area 11 plate map

## **Appendix 1: Details of Documentary Records Generated in the Field**

In the table below is detailed the photographs taken in each area.

Area	Photograph Number	Description
1	184 186 1658 1659 1660 1661 1662 1663 1664 1665 1666 1668 1669 1789 1790	Sloped road Project Area Test pit test pit profile work in progress project area slope slope rock outcropping project area project area beach rock outcropping rock outcropping project area
4	8205 8206 8207	test pit profile project area
5a	8209 8210 8212 8213 8214 8215 8216 8217 8218	disturbed area slope project area slope with bedrock outcropping project area project area project area project area project area low lying and wet
5b	1767	cliff face
7	1771	cliff face

*Stage 2 Archaeological Assessment of Quirke Lake Property Development, Buckles Township, City of Elliot Lake, Algoma District*

8	8220	low lying and wet test pit
	8221	low lying and wet test pit profile
	8222	project area
	8223	project area
	8224	slope
	8225	rock outcropping
	8226	project area
	8227	slope
	8228	slope
	8229	project area
	8230	project area
	8233	work in progress
	8234	test pit
	8235	test pit profile
	8237	test pit profile
	8238	project area
	8239	project area
	8240	slope
8241	rock outcropping	
8242	rocky slope	
8243	rocky slope	
9	8244	project area

*Stage 2 Archaeological Assessment of Quirke Lake Property Development, Buckles Township, City of Elliot Lake, Algoma District*

10	8245	slope
	8246	slope
	8247	slope
	8248	slope
	8249	slope
	8256	slope
	8257	slope
	8258	rock outcropping
	8259	project area
	8260	slope
	8261	project area
	8263	rocky slope
	8264	rock
	8265	slope
	8266	slope
	8267	project area
	8268	rock slope
	8269	project area
	8270	slope
	8271	slope
	8272	slope
	8273	project area
	8274	slope
	8275	rock
	8276	project area
	8277	rock
	8278	rock
	8280	work in progress
	8281	project area
	8282	project area
	8284	slope
	8285	test pit
	8286	test pit profile
	8287	project area
8288	rocky slope	
8289	rocky slope	
8290	project area	
8291	work in progress	
8292	project area	
8293	metal tube	
9294	slope	

*Stage 2 Archaeological Assessment of Quirke Lake Property Development, Buckles Township, City of Elliot Lake, Algoma District*

11	1789 1790 1791	rock rock slope
----	----------------------	-----------------------

Date	Area	Information Generated in the field
18/10/2012	1	16 Photographs 2 Pages of Field Notes 1 sketch map
27/06/2013	11	3 photographs 2 pages of field notes
28/06/2013	4	3 photographs 2 pages of Field Notes
28/06/2013	5a	2 photographs 2 pages of field notes
29/06/2013	5a	7 photographs 2 pages of field notes 1 sketch map
29/06/2013	8	21 photographs 2 pages of field notes
29/06/2013	9	1 photograph 2 pages of field notes
30/06/2013	10	31 photographs 2 pages of field notes
01/07/2013	10	11 photographs 2 pages of field notes 1 sketch map

**Appendix 2: Daily Conditions during Assessment**

<b>Date</b>	<b>Daily Low</b>	<b>Daily High</b>	<b>Conditions</b>
October 18, 2012	5°C	14°C	Overcast
June 27, 2013	13°C	26°C	Sunny
June 28, 2013	11°C	23°C	Sunny with clouds
June 29, 2013	12°C	17°C	Cloudy with sunny breaks
June 30, 2013	11°C	23°C	Overcast
July 1, 2013	17°C	28°C	Sunny