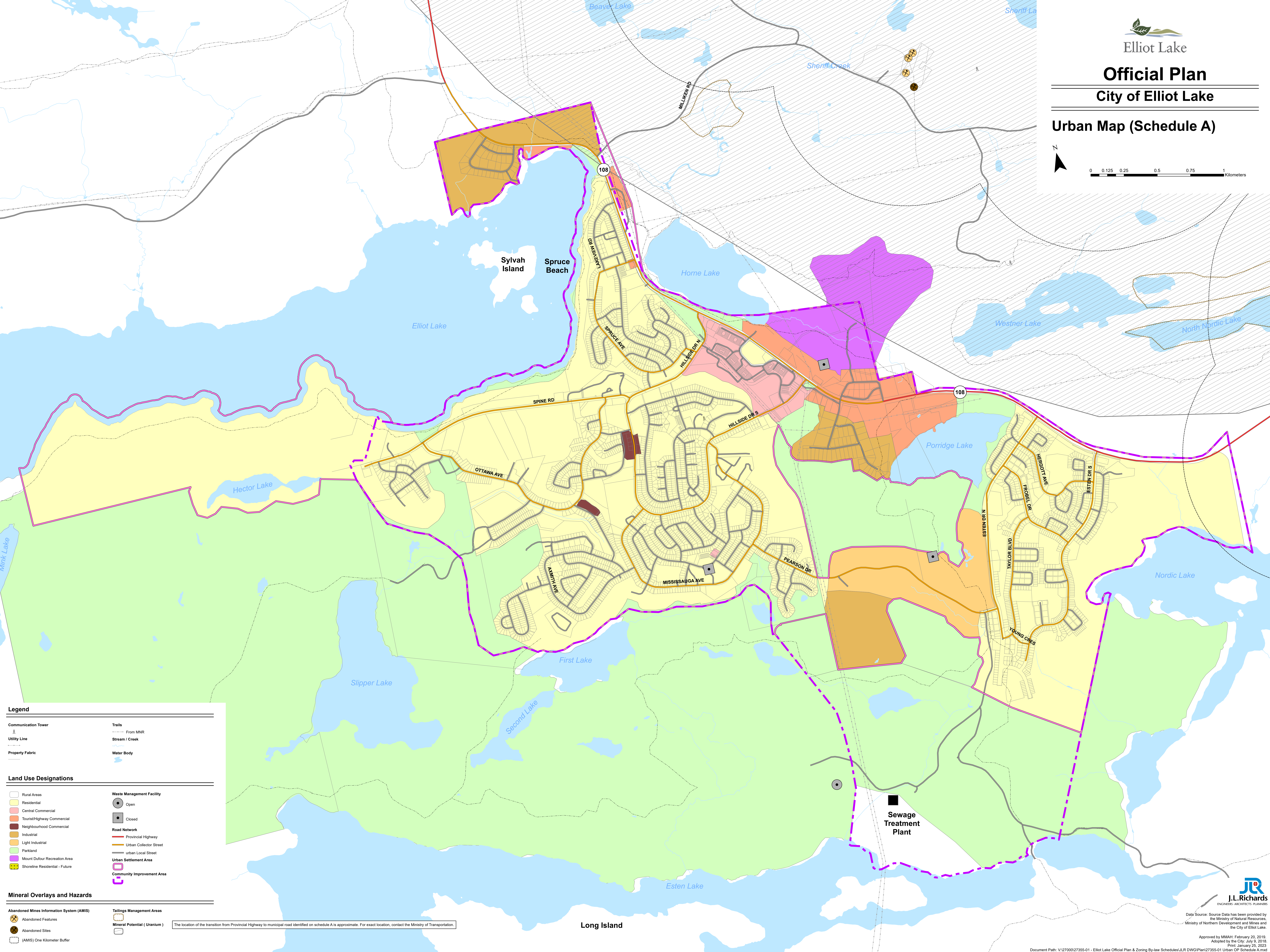
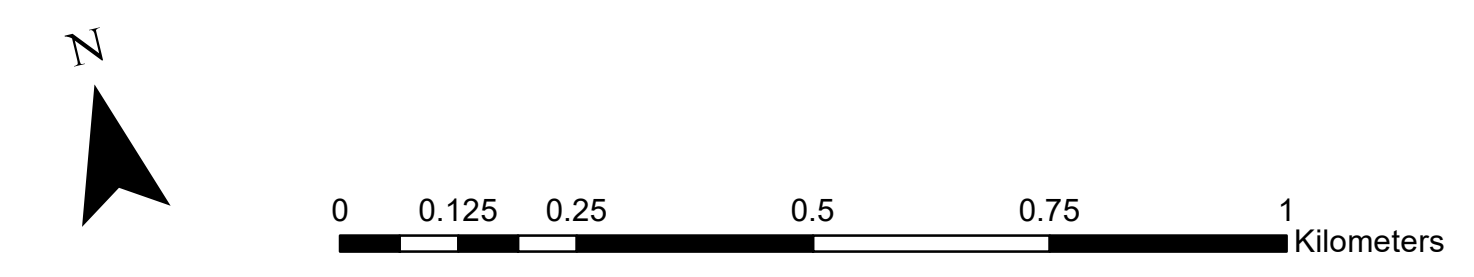




# Official Plan City of Elliot Lake

## Urban Map (Schedule A)



**Legend**

Communication Tower	Trails
Utility Line	Stream / Creek
Property Fabric	Water Body

**Land Use Designations**

Rural Areas	Waste Management Facility
Residential	Open
Central Commercial	Closed
Tourist/Highway Commercial	Road Network
Neighbourhood Commercial	Provincial Highway
Industrial	Urban Collector Street
Light Industrial	Urban Local Street
Parkland	Urban Settlement Area
Mount Dufour Recreation Area	Community Improvement Area
Shoreline Residential - Future	

**Mineral Overlays and Hazards**

Abandoned Mines Information System (AMIS)	Tailings Management Areas
Abandoned Features	Mineral Potential ( Uranium )
Abandoned Sites	
(AMIS) One Kilometer Buffer	

The location of the transition from Provincial Highway to municipal road identified on schedule A is approximate. For exact location, contact the Ministry of Transportation.

Sewage Treatment Plant



Data Source: Source Data has been provided by the Ministry of Natural Resources, Ministry of Northern Development and Mines and the City of Elliot Lake.

Approved by MMAH: February 20, 2019; Adopted by the City: July 9, 2018; Print: January 25, 2023